

# MONTHLY MEMBERSHIP PROGRESS REPORT

LOCATION INDIA

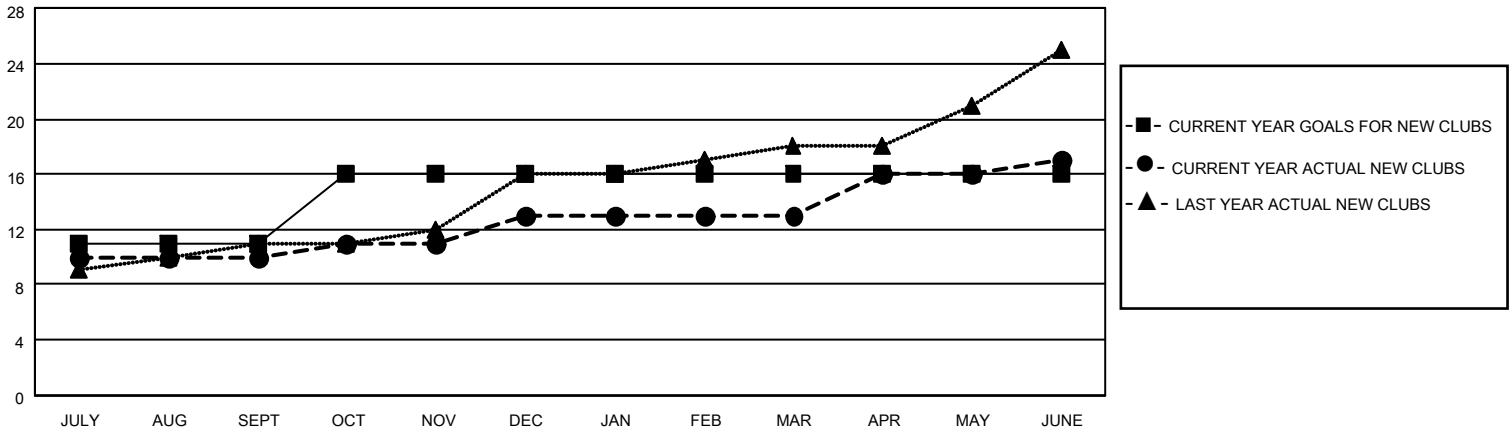
District 321A2

Results as of: 6/30/2022

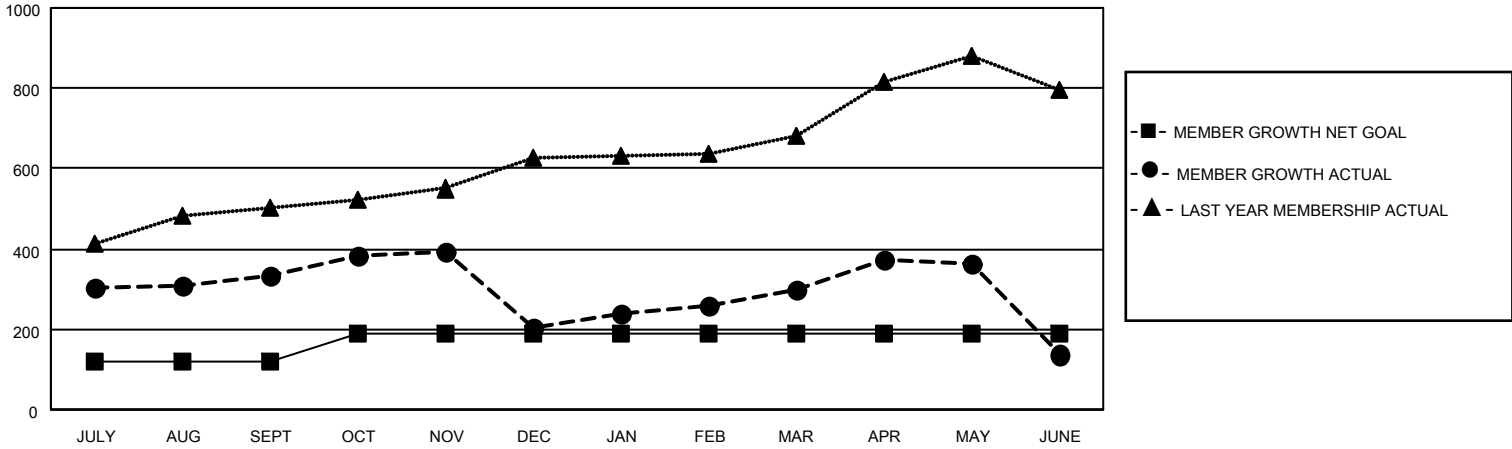
Clubs			
RESULTS FOR 2021-2022			
QUARTER	NEW CLUB GOAL	NEW CLUBS	DROPPED CLUBS
JULY/AUG/SEPT	11	10	4
OCT/NOV/DEC	5	3	7
JAN/FEB/MAR	0	0	3
APR/MAY/JUNE	0	4	8

Members			
RESULTS FOR 2021-2022			
QUARTER	MEMBER GROWTH NET GOAL	MEMBER GROWTH ACTUAL	DROPPED MEMBERS ACTUAL (including transfers)
JULY/AUG/SEPT	120	508	144
OCT/NOV/DEC	70	221	338
JAN/FEB/MAR	0	325	137
APR/MAY/JUNE	0	492	638

**GOALS AND ACTUAL NEW CLUBS CUMULATIVE**



**GOALS AND ACTUAL MEMBERS CUMULATIVE**



**DROPPED CLUBS: 22**

113 CLUBS OF 167 ADDED 1 OR MORE NEW MEMBERS

GENDER DISTRIBUTION

MALE	2,599 (63.58%)
FEMALE	1,489 (36.42%)
NON BINARY	0 (0.00%)
PREFER NOT TO ANSWER	0 (0.00%)

DROPPED MEMBERS

[CLICK HERE FOR CUMULATIVE MEMBERSHIP DATA](#)

DECEASED	17
CLUB CANCELLED	337
OTHER	903
<b>TOTAL</b>	<b>1,257</b>

TOTAL FAMILY UNIT MEMBERS 3,002

FAMILY MEMBERS PAYING HALF DUES 1,834